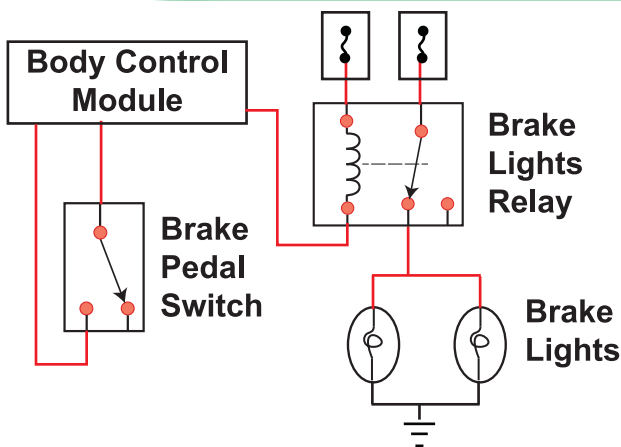


### The Old Way

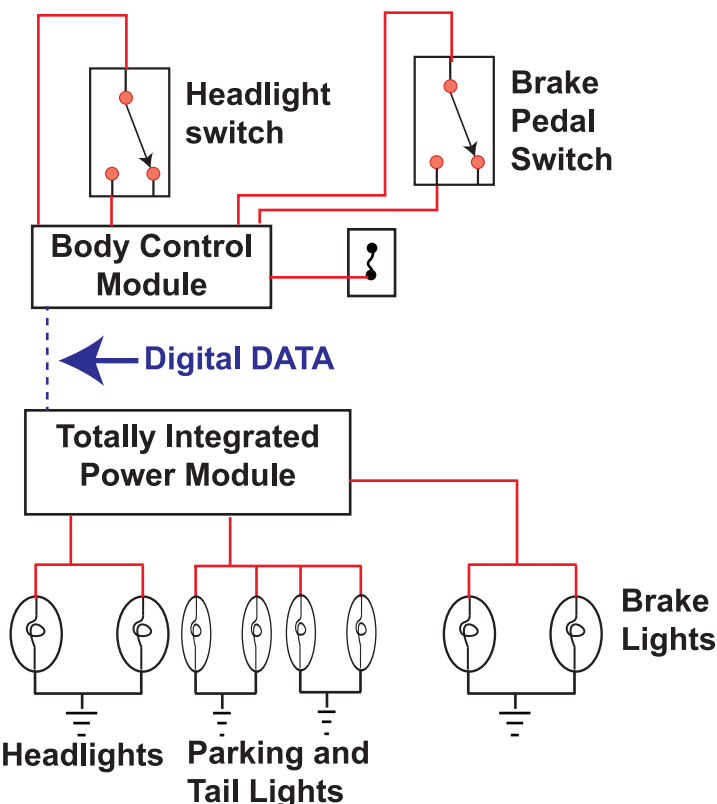
Power goes from the fuse to the switch. It flows through the switch to the bulb and then to ground. Easy, peasey.



### The Body Control Module Method

The switches are just inputs to the body control module. They do NOT actually switch power to the bulbs.

Based on an input from a switch, the body control module can either switch power to the bulbs or provide a ground connection to the control coil side of a relay.



### The Digital Method

The switches are just inputs to the body control module. They do NOT actually switch power to the bulbs.

The body control module interprets the switch requests from the individual switches and converts that information into digital data.

The data is sent along a digital bus to a digital switching station usually located inside the fuse/relay box.

That's where the power is actually switched to the bulbs.